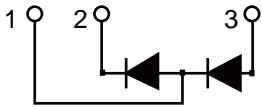


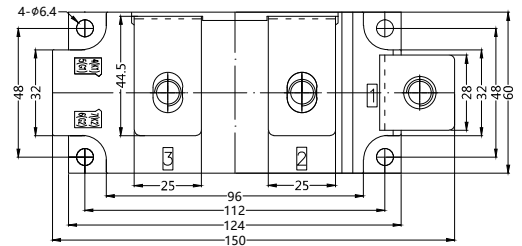
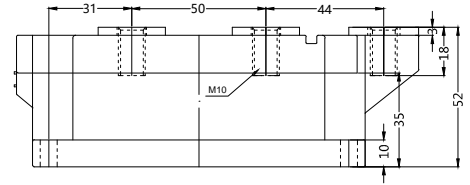
SDD600N26BT

Diode-Diode Modules



Type	V _{RSM} V	V _{RRM} V
SDD600N08BT	900	800
SDD600N12BT	1300	1200
SDD600N14BT	1500	1400
SDD600N16BT	1700	1600
SDD600N18BT	1900	1800
SDD600N20BT	2100	2000
SDD600N22BT	2300	2200
SDD600N24BT	2500	2400
SDD600N26BT	2700	2600

Dimensions in mm(inch) (1mm=0.0394")



Symbol	Test Conditions	Maximum Ratings	Unit
.FRMS IFAVM	T _{VJ} =T _{VJM} T _C =100°C; 180° sine	942 600	A
I _{FSM}	T _{VJ} =45°C V _R =0 t=10ms (50Hz), sine t=8.3ms (60Hz), sine	19000 20100	A
	T _{VJ} =T _{VJM} V _R =0 t=10ms(50Hz), sine t=8.3ms(60Hz), sine	16200 17200	
∫i ² dt	T _{VJ} =45°C V _R =0 t=10ms (50Hz), sine t=8.3ms (60Hz), sine	1805000 1683000	A ² s
	T _{VJ} =T _{VJM} V _R =0 t=10ms(50Hz), sine t=8.3ms(60Hz), sine	1319000 1230000	
T _{VJ} T _{VJM} T _{stg}		-40...+150 150 -40...+125	°C
V _{ISOL}	50/60Hz, RMS I _{ISOL} ≤1mA t=1min t=1s	3000 3600	V~
M _d	Mounting torque (M5) Terminal connection torque (M10)	4.5-7/40-60 12-15/106-132	Nm/lb.in.
Weight	Typical including screws	940	g



Sirectifier®

SDD600N26BT

Diode-Diode Modules

Symbol	Test Conditions	Characteristic Values	Unit
I_{RRM}	$T_{VJ}=T_{VJM}; V_R=V_{RRM}$	50	mA
V_F	$I_F=1800A; T_{VJ}=25\text{ }^\circ\text{C}$	1.35	V
V_{FO}	For power-loss calculations only	0.77	V
rF	$T_{VJ}=T_{VJM}$	0.25	m Ω
R_{thJC}	per junction;DC current	0.065	K/W
R_{thJK}	per junction;DC current	0.02	K/W
d_S	Creepage distance on surface	12.7	mm
d_A	Strike distance through air	9.6	mm
a	Maximum allowable acceleration	50	m/s ²

FEATURES

- * International standard package
- * Pressure Contacts Technology for high reliability
- * Isolation voltage 3600 V~
- * UL file NO.310749
- * RoHs Compliant

APPLICATIONS

- * Supplies for DC power equipment
- * DC supply for PWM inverter
- * Field supply for DC motors
- * Battery DC power supplies

ADVANTAGES

- * Space and weight savings
- * Simple mounting
- * Improved temperature and power cycling
- * Reduced protection circuits

Sirectifier[®]

SDD600N26BT

Diode-Diode Modules

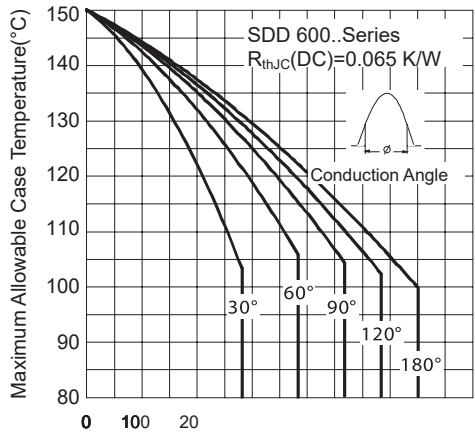


Fig.1 Average Forward Current(A)

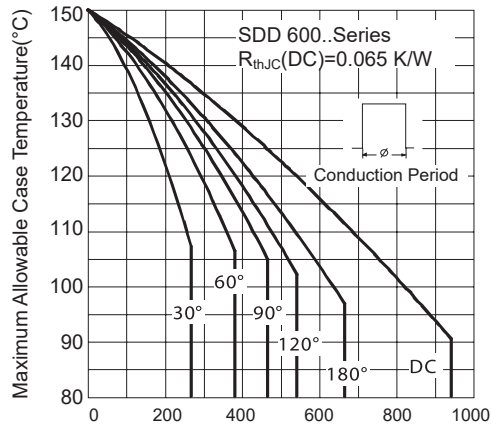


Fig.2 Average Forward Current(A)

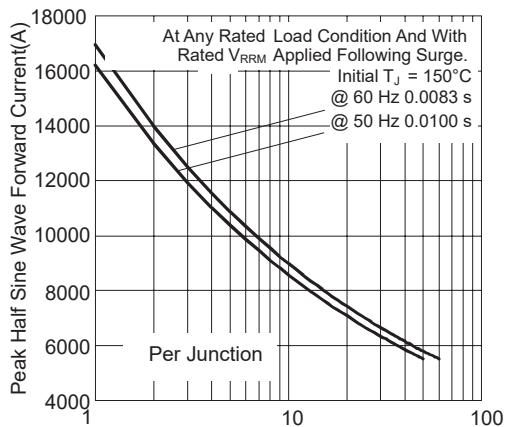


Fig.3 Number of Equal Amplitude Half Cycle Current Pulses (N)

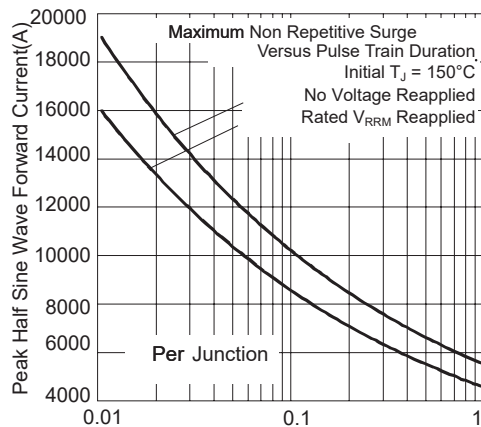


Fig.4 Pulse Train Duration (S)

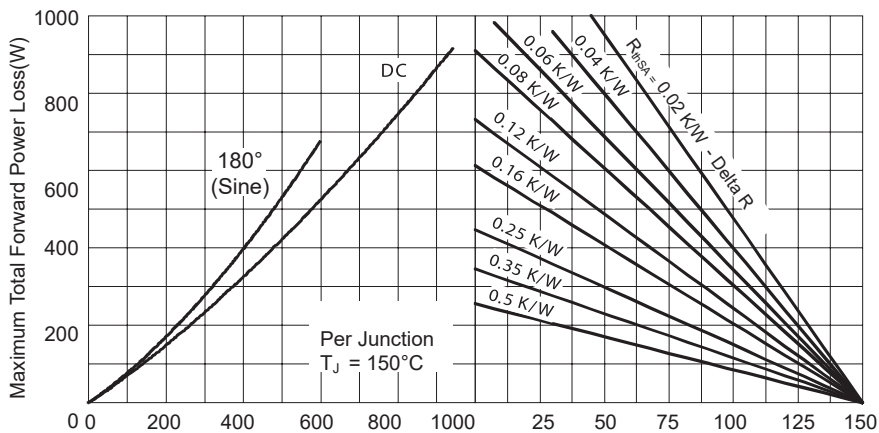


Fig.5 Total RMS Output Current(A) Maximum Allowable Case Temperature(°C)



SDD600N26BT

Diode-Diode Modules

