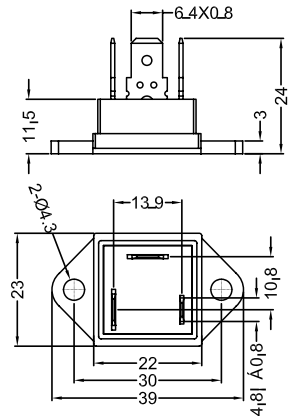
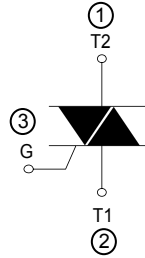
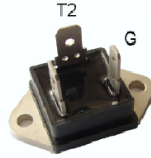


SBTA&5G04B thru SBTA&5G16B

Discrete Triacs (Isolated)

Unit:mm

	V _{DRM/RRM}	V _{DSM/RSM}
	V	V
SBTA25G04B	400	500
SBTA25G06B	600	700
SBTA25G08B	800	900
SBTA25G10B	1000	1100
SBTA25G12B	1200	1300
SBTA25G16B	1600	1700



Symbol	Test Conditions	Maximum Ratings	Unit	
I _{RMS}	T _{VJ} =80 °C	25	A	
I _{TSM}	T _{VJ} =45°C V _R =0 t=10ms (50Hz), sine t=8.3ms (60Hz), sine	260 300	A	
	T _{VJ} =T _{VJM} V _R =0 t=10ms(50Hz), sine t=8.3ms(60Hz), sine	220 250		
i ² t	T _{VJ} =45°C V _R =0 t=10ms (50Hz), sine t=8.3ms (60Hz), sine	320 380	A ² s	
	T _{VJ} =T _{VJM} V _R =0 t=10ms(50Hz), sine t=8.3ms(60Hz), sine	260 310		
(di/dt) _{cr}	T _{VJ} =T _{VJM} f=50Hz, t _p =200us V _D =2/3V _{DRM} I _G =0.3A di _G /dt=0.3A/us	repetitive, I _T =40A non repetitive, I _T =I _{TAVM}	50 300	A/us
	(dv/dt) _{cr}	T _{VJ} =T _{VJM} ; R _{GK} =∞; method 1 (linear voltage rise)	V _{DR} =2/3V _{DRM} 500	
P _{GM}	T _{VJ} =T _{VJM} I _T =I _{TAVM}	t _p =30us t _p =300us	10 5	W
P _{GA V}			1	W
V _{RGM}			10	V
T _{VJ} T _{VJM} T _{stg}			-40...+125 125 -40...+125	°C
V _{ISOL}	50/60Hz, RMS	t=1minute, leads-to-tab	2500	V~
M _d	Mounting torque (M4)		0.8...1.5	Nm
Weight			25	g

Sirectifier[®]

SBTA&5G04B thru SBTA&5G16B

Discrete Triacs(Isolated)

Symbol	Test Conditions	Characteristic Values	Unit
I_R, I_D	$T_{VJ}=T_{VJM}; V_D=V_{DRM}$	5	mA
V_{TM}	$I_T=35A; T_{VJ}=25^{\circ}C$	1.40	V
V_{TO}	For power-loss calculations only ($T_{VJ}=125^{\circ}C$)	0.80	V
r_T		8.9	Ω
V_{GT}	I II III IV $V_D=6V; I_T=1A; T_{VJ}=25^{\circ}C$	3	V
		3	
		3	
		1.5	
I_{GT}	I II III IV $V_D=6V; I_T=1A; T_{VJ}=25^{\circ}C$	50	mA
		50	
		50	
		100	
V_{GD}	$T_{VJ}=T_{VJM}; V_D=2/3V_{DRM}$	0.2	V
I_{GD}		10	mA
I_H	$T_{VJ}=25^{\circ}C; V_D=6V; R_{GK}=\infty$	100	mA
R_{thJC}	DC current	1.6	K/W
R_{thJH}	DC current	1.8	K/W
a	Max. acceleration, 50 Hz	50	m/s ²

Sirectifier[®]

SBTA5G04B thru SBTA5G16B

Discrete Triacs (Isolated)

