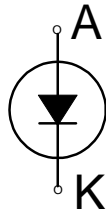
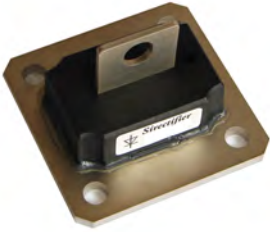
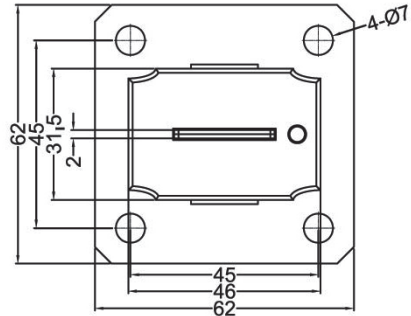
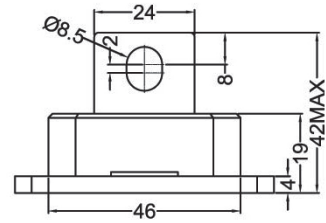


SD150-01NB thru SD150-16NB

Single Diode Modules



(Baseplate) Non-Isolated



	V_{RSM} V	V_{RRM} V
SD150-01NB	200	100
SD150-02NB	300	200
SD150-04NB	500	400
SD150-08NB	900	800
SD150-10NB	1100	1000
SD150-12NB	1300	1200
SD150-16NB	1700	1600

Symbol	Test Conditions	Maximum Ratings	Unit
I_{F(AV)M}	T _C =100°C; 180° sine	150	A
I_{FSM}	T _{VJ} =45°C; V _R =0V; t=10ms (50Hz), sine	2500	A
	t=8.3ms (60Hz), sine	2800	
I²_t	T _{VJ} =150°C; V _R =0V; t=10ms(50Hz), sine	2250	A ² s
	t=8.3ms(60Hz), sine	2350	
T_{VJ}		-40...+150	°C
T_{VJM}		150	
T_{stg}		-40...+125	
M_d	Mounting torque (M6 Baseplate)	2.5...5.0	Nm
M_d	Mounting torque (M8 Terminal)	8.8...11	Nm
Weight		160	g

Symbol	Test Conditions	Characteristic Values	Unit
I_R	T _{VJ} =T _{VJM} ; V _R =V _{RRM}	≤ 10	mA
V_F	I _F =450A; T _{VJ} =25°C	≤ 1.20	V
V_{To}	For power-loss calculations only	0.84	V
r_T	T _{VJ} =T _{VJM}	7.16	mΩ
R_{thJC}	DC current typical	0.3	K/W

Sirectifier®

SD150-01NB thru SD150-16NB

